

# Laboratory Product Catalog



**WHITE** Dental®

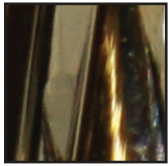
Better Patient Outcomes  
Improved Efficiency  
Faster Practice Growth

# Increased Performance and Durability with Zirconium Nitride Coated Lab Cutters

- 10X increased durability and longevity with extremely hard cutting surface of 2,800 Vickers
- Abrasion resistance reduces surface heat and vibration for a cooler, more consistent surface finish
- Comprehensive selection of shapes, sizes and grits, manufactured with tungsten carbide heads and stainless steel shanks

## SGE SERIES™

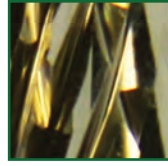
Model Plaster  
BULK REDUCTION ON  
WET PLASTER  
Soft Reline - REMOVAL



Shank	ISO Shape	200	201
SSW Item Number		GW79-050SGE-4	GW79-070SGE-4
ISO Grit		223	223
Head Dia		050	070
Head Length mm		13	14
Color Band			
Max Speed		30K	20K
Brasseler Number		H79SGE.11.050	H79SGE.11.070
Edenta Number		-	-

## GE SERIES™

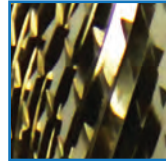
Model Plaster - BULK MATERIAL REDUCTION OF PLASTER  
Acrylic - BULK REDUCTION  
Non-Precious Alloy - BULK REDUCTION



Shank	ISO Shape	143	200	200	200	200	201
SSW Item Number		GW72-060GE-4	GW79-045GE-4	GW79-050GE-4	GW351-060GE-4	GW351-070GE-4	GW79-060GE-4
ISO Grit		220	220	220	220	220	220
Head Dia		060	045	050	060	070	060
Head Length mm		13	13	13	13	13	14
Color Band							
Max Speed		20K	30K	30K	20K	20K	20K
Brasseler Number		-	-	H79GE.11.050	H351GE.11.060	H351GE.11.070	-
Edenta Number		5850.060HP	5650.045HP	-	5250.060HP	6050.070HP	5550.060HP
Dedeco Number		-	-	-	6351GE-060	-	-

## E SERIES™

Chrome Cobalt - TRIMMING PARTIAL DENTURE FRAMEWORK  
Hard Acrylic - TRIMMING DENTURES, TRAYS, TEMPORARY RESTORATIONS  
Metal Alloy - TRIMMING CROWN AND BRIDGE METAL SUBSTRUCTURES  
Composite - TRIMMING TEMPORARY APPLIANCE AND RESTORATIONS  
Plaster & Stone - TRIMMING MODELS & DIES



Shank	ISO Shape	201	237	257	275
SSW Item Number		GW79-070GE-4	GW77-060GE-4	GW78-060GE-4	GW251-060GE-4
ISO Grit		220	220	220	220
Head Dia		070	060	060	060
Head Length mm		14	11	12	14
Color Band					
Max Speed		20K	20K	20K	20K
Brasseler Number		H79GE.11.070	-	-	H251GE.11.060
Edenta Number		-	5150.060HP	5350.060HP	5450.060HP
Dedeco Number		-	-	-	6251GE-060

Shank	ISO Shape	001	001	001	001	001
SSW Item Number		GW71-014E-4	GW71-023E-4	GW71-027E-4	GW71-031E-4	GW71-040E-4
ISO Grit		190	190	190	190	190
Head Dia		014	023	027	031	040
L mm		1.25	2.1	2.5	2.6	3.5
Color Band						
Max Speed		40K	40K	40K	30K	30K
Brasseler Number		H71E.11.014	H71E.11.023	H71E.11.027	H71E.11.031	H71E.11.040
Edenta Number		-	7110.023HP	7110.027HP	7110.031HP	7110.040HP
Dedeco Number		-	G071E-023	G071E-027	-	G071E-040

Shank	ISO Shape	001	001	001	110	123	139	141	143	144	144	187
SSW Item Number		GW71-050E-4	GW71-060E-4	GW71-070E-4	GW296-040E-4	GW364-023E-4	GW129-014E-4	GW141-023E-4	GW72-060E-4	GW364-023RE-4	GW293-023E-4	GW257-023E-4
ISO Grit		190	190	190	190	190	190	190	190	190	190	190
Head Dia		050	060	070	040	023	014	023	060	023	023	023
L mm		4.5	5.5	6.5	6	15	4	8	13	15	15	15
Color Band												
Max Speed		30K	20K	20K	30K	40K	40K	40K	20K	40K	40K	40K
Brasseler Number		H71E.11.050	H71E.11.060	H71E.11.070	H296E.11.040	H364E.11.023	H129E.11.014	H141E.11.023	H72E.11.060	H364RE.10.023	H293E.11.023	-
Edenta Number		7110.050HP	7110.060HP	-	-	0310.023HP	-	-	5810.060HP	0210.023HP	-	0610.023HP
Dedeco Number		G071E-050	-	-	-	-	-	-	G072E-060	-	-	-

Shank	ISO Shape	198	198	199	199	200	200	200	200	200	201
SSW Item Number		GW138-023E-4	GW351-040E-4	GW261-023E-4	GW79-031E-4	GW79-040E-4	GW79-045E-4	GW79-050E-4	GW351-060E-4	GW351-070E-4	GW257-060RE-4
ISO Grit		190	190	190	190	190	190	190	190	190	190
Head Dia		023	040	023	031	040	045	050	060	070	060
Head Length mm		8	8	11.5	11.5	13	13	13	13	13	14
Color Band											
Max Speed		440K	30K	40K	30K	30K	30K	30K	20K	20K	20K
Brasseler Number		H138E.11.023	H351E.11.040	H261E.11.023	-	H79E.11.040	-	H79E.11.050	H351E.11.060	H351E.11.070	H257RE.11.060
Edenta Number		0710.023HP	6210.040HP	0110.023HP	6410.031HP	5710.040HP	5610.045HP	-	5210.060HP	-	5910.060HP
Dedeco Number		-	6351E-040	6261E-023	6079E-031	6079E-040	6079E-045	-	6351E-060	-	6257RE-060

Shank	ISO Shape	201	225	225	225	237	237	237	237	257	257
SSW Item Number		GW79-060E-4	GW137-016E-4	GW137-023E-4	GW137-060E-4	GW77-023E-4	GW77-029E-4	GW77-040E-4	GW77-060E-4	GW78-023E-4	GW78-040E-4
ISO Grit		190	190	190	190	190	190	190	190	190	190
Head Dia		060	016	023	060	023	029	040	060	023	040
Head Length mm		14	4	5.5	8	5.5	5.5	9	11	6	9
Color Band											
Max Speed		20K	40K	40K	20K	40K	40K	30K	20K	40K	30K
Brasseler Number		-	H137E.11.016	-	H137E.11.060	H77E.11.023	H77E.11.029	H77E.11.040	H77E.11.060	H78E.11.023	-
Edenta Number		5510.060HP	0910.023HP	0910.023HP	-	7710.023HP	7710.029HP	-	7010.060HP	-	6110.040HP
Dedeco Number		6079E-060	-	6137E-023	-	-	6077E-029	-	60771E-060	-	6078E-040

Shank	ISO Shape	257	273	275	275	275	277	277	277	289	292
SSW Item Number		GW78-060E-4	GW251-040E-4	GW250-040E-4	GW251-060E-4	GW251-070E-4	GW73-023E-4	GW73-040E-4	GW73-060E-4	GW139-023E-4	GW295-023E-4
ISO Grit		190	190	190	190	190	190	190	190	190	190
Head Dia		060	040	040	060	070	023	040	060	023	023
Head Length mm		12	9	13	14	14	3.8	6	10	8	15
Color Band											
Max Speed		20K	30K	30K	20K	20K	40K	30K	20K	40K	40K
Brasseler Number		H78E.11.060	H251E.11.040	H250E.11.040	H251E.11.060	H251E.11.070	H73E.11.023	H73E.11.040	H73E.11.060	H139E.11.023	H295E.11.023
Edenta Number		5310.060HP	7210.040HP	-	5410.060HP	-	1810.023HP	-	6310.060HP	0810.023HP	0410.023HP
Dedeco Number		-	-	-	6251E-060L	-	-	-	-	-	6295E-023

## EF SERIES™

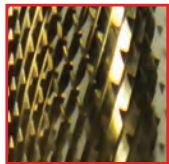
Chrome Cobalt - TRIMMING DENTURE FRAMEWORK

Hard Acrylic - TRIMMING DENTURES, TRAYS, TEMPORARY RESTORATIONS

Metal Alloy - TRIMMING CROWN AND BRIDGE METAL SUBSTRUCTURES

Composite - TRIMMING TEMPORARY APPLIANCE AND RESTORATIONS

Plaster & Stone - TRIMMING MODELS & DIES

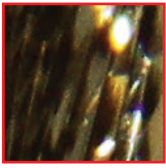


Shank	ISO Shape	141	144	187	187	198	199	199	200	200	200
SSW Item Number		GW129-023EF-4	GW364-023REF-4	GW257-023EF-4	GW257-060EF-4	GW138-023EF-4	GW261-023EF-4	GW79-031EF-4	GW79-040EF-4	GW79-045EF-4	GW351-060EF-4
ISO Grit		140	140	140	140	140	140	140	140	140	140
Head Dia		023	023	023	060	023	023	031	040	045	060
Head Length mm		8	15	15	14	8	11.5	11.5	13	13	13
Color Band											
Max Speed		40K	40K	40K	20K	40K	40K	30K	30K	30K	20K
Brasseler Number		H129EF.11.023	H364R.11.023	H257EF.11.023	H257EF.11.060	H138EF.11.023	H261EF.11.023	-	H79EF.11.040	-	H351EF.11.060
Edenta Number		1720.023HP	0220.023HP	0620.023HP	-	0720.023HP	0120.023HP	6420.031HP	5720.040HP	5620.045HP	5220.060HP
Dedeco Number		-	-	6257EF-023	-	6138EF-023	6261EF-023	6261EF-023	6079EF-040	6079EF-045	6351EF-060



## UK SERIES™

Cross Cut



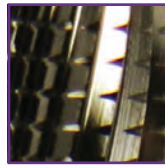
Ceramic Restorations - TRIM AND FINISH  
Composite Restorations - TRIM AND FINISH  
Acrylic Appliances - TRIM AND CONTOUR



Shank	ISO Shape	198	289
SSW Item Number		GW138-023UK-4	GW139-023UK-4
ISO Grit		144	144
Head Dia		023	023
Head Length mm		8	8
Color Band			
Max Speed		40K	40K
Brasseler Number		H138UK.11.023	H139UK.11.023
Edenta Number		-	-

## Q SERIES™

Cross Cut



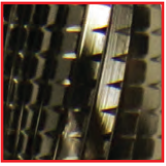
Acrylic - ADJUST AND CONTOUR  
Titanium - LIGHT TRIMMING  
Plaster - TRIM



Shank	ISO Shape	200	200	272	275
SSW Item Number		GW79-040Q-4	GW351-060Q-4	GW390-016Q-4	GW251-060Q-4
ISO Grit		176	176	176	176
Head Dia		040	060	016	060
Head Length mm		13	13	3.5	14
Color Band					
Max Speed		30K	20K	40K	20K
Brasseler Number		H79Q.11.040	H351Q.11.060	H390Q.11.016	H251Q.11.060
Edenta Number		-	-	-	-

## FSQ SERIES™

Cross Cut



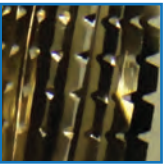
Titanium Implant Abutments - TRIM AND CONTOUR  
Soft Acrylic Denture Reline - TRIM  
Acrylic Appliances - TRIM



Shank	ISO Shape	141	200	201	275	289
SSW Item Number		GW129-023FSQ-4	GW79-040FSQ-4	GW79-070FSQ-4	GW251-060FSQ-4	GW139-023FSQ-4
ISO Grit		132	132	132	132	132
Head Dia		023	040	070	060	023
Head Length mm		8	13	14	14	8
Color Band						
Max Speed		40K	30K	20K	20K	40K
Brasseler Number		H129FSQ.11.023	H79FSQ.11.040	H79FSQ.11.070	H251FSQ.11.060	H139FSQ.11.023
Edenta Number		1727.023HP	6927.040HP	-	7227.060HP	0827.023HP

## GSQ SERIES™

Cross Cut

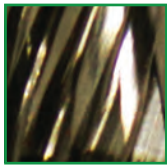


Soft Acrylic or Silicone Denture Reline - TRIM  
Non-Precious Alloy - BULK REDUCTION



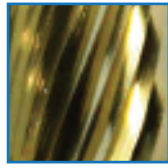
Shank	ISO Shape	199	200	200	200	201	275
SSW Item Number		GW261-023GSQ-4	GW79-040GSQ-4	GW351-060GSQ-4	GW351-070GSQ-4	GW79-070GSQ-4	GW251-060GSQ-4
ISO Grit		172	172	172	172	172	172
Head Dia		023	040	060	070	070	060
Head Length mm		11.5	13	13	13	14	14
Color Band							
Max Speed		40K	30K	20K	20K	20K	20K
Brasseler Number		H261GSQ.11.023	H79GSQ.11.040	H351GSQ.11.060	-	H79GSQ.11.070	H251GSQ.11.060
Edenta Number		0175.023HP	-	5275.060HP	6075.070HP	-	7275.060HP
Dedeco Number		6261GSQ-023	-	-	-	-	6251GSQ-060

**G SERIES™** Plaster and Stone - TRIM  
Acrylic - TRIM  
Spiral Fluted



Shank	ISO Shape	143	143	200	200	200	200	201	201	237	257
SSW Item Number		GW72-060G-4	GW72-070G-4	GW79-045G-4	GW79-050G-4	GW351-060G-4	GW351-070G-4	GW79-060G-4	GW79-070G-4	GW77-060G-4	GW78-060G-4
ISO Grit		215	215	215	215	215	215	215	215	215	215
Head Dia		060	070	045	050	060	070	060	070	060	060
Head Length mm		13	13	13	13	13	13	14	14	11	12
Color Band		▶	▶	▶	▶	▶	▶	▶	▶	▶	▶
Max Speed		20K	20K	30K	30K	20K	20K	20K	20K	20K	20K
Brasseler Number		H726.11.060	H726.11.070	-	H796.11.050	H3516.11.060	H3516.11.070	-	H796.11.070	H776.11.060	-
Edenta Number		5880.060HP	-	5680.045HP	-	5280.060HP	-	5580.060HP	-	-	5380.060HP

**M SERIES™** Plaster & Stone - TRIM  
Acrylic - BULK REDUCTION  
Spiral Fluted



Shank	ISO Shape	275	Shank	ISO Shape	001	001	001	143	187	199	199	199	200
SSW Item Number		GW251-060G-4	SSW Item Number		GW71-016M-4	GW71-040M-4	GW71-050M-4	GW72-060M-4	GW257-023M-4	GW261-023M-4	GW79-031M-4	GW79-040M-4	
ISO Grit		215	ISO Grit		175	175	175	175	175	175	175	175	
Head Dia		060	Head Dia		016	040	050	060	023	023	031	040	
Head Length mm		14	Head Length mm		1.4	3.5	4.5	13	15	11.5	11.5	13	
Color Band		▶	Color Band		▶	▶	▶	▶	▶	▶	▶	▶	
Max Speed		20K	Max Speed		40K	30K	30K	20K	40K	40K	30K	30K	
Brasseler Number		-	Brasseler Number		H71.11.016	H71.11.040	H71.11.050	H72.11.060	H257.11.023	H261.11.023	-	H79.11.040	
Edenta Number		5480.060HP	Edenta Number		-	7170.040HP	7170.050HP	5870.060HP	-	-	6470.031HP	5770.040HP	



Shank	ISO Shape	200	200	200	200	201	201	201	237	257	257
SSW Item Number		GW79-045M-4	GW79-050M-4	GW351-060M-4	GW351-070M-4	GW257-060RM-4	GW79-060M-4	GW79-070M-4	GW77-060M-4	GW78-023M-4	GW78-060M-4
ISO Grit		175	175	175	175	175	175	175	175	175	175
Head Dia		045	050	060	070	060	060	070	060	023	060
Head Length mm		13	13	13	13	14	14	14	11	6	12
Color Band		▶	▶	▶	▶	▶	▶	▶	▶	▶	▶
Max Speed		30K	30K	20K	20K	20K	20K	20K	20K	40K	20K
Brasseler Number		-	H79.11.050	H351.11.060	H351.11.070	H257R.11.060	-	H79.11.070	H77.11.060	H78.11.023	H78.11.060
Edenta Number		5670.045HP	-	5270.060HP	-	5970.060HP	5570.060HP	-	5170.060HP	-	5370.060HP



Shank	ISO Shape	275	275	277
SSW Item Number		GW251-060M-4	GW251-070M-4	GW73-060M-4
ISO Grit		175	175	175
Head Dia		060	070	060
Head Length mm		14	14	10
Color Band		▶	▶	▶
Max Speed		20K	20K	20K
Brasseler Number		251.11.060	H251.11.070	H73.11.060
Edenta Number		5470.060HP	-	6370.060HP



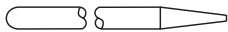

# DIAMOND DISCS

## EXPRESS LINE DIAMOND DISCS

Express Line diamond discs increase efficiency when separating crowns and bridges, contouring composite and ceramic or cutting ceramic due to the high diamond particle density which creates a faster and more precise cutting instrument that also lasts up to 30% longer than competitor discs.

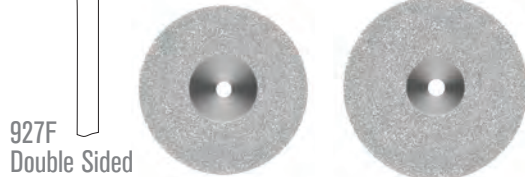
Uniform spacing between the diamond particles ensure immediate removal of debris and less clogging

- Sold in packs of 1 ea.

Standard .0925"   
 Straight Handpiece .118" 

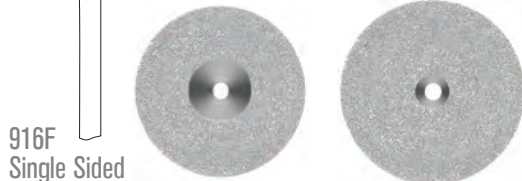
Usage: Recommended maximum speed 20,000 RPMS

### FLEX Mounted Diamond Discs



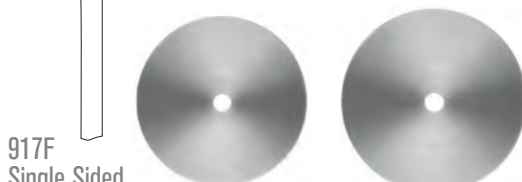
927F  
Double Sided

Order #	927F200M	927F220M
Head Size (1/10mm)	200	220
Thickness (mm)	0.24	0.24
Grit	Medium	Medium



916F  
Single Sided

Order #	916F200M	916F220M
Head Size (1/10mm)	200	220
Thickness (mm)	0.17	0.17
Grit	Medium	Medium



917F  
Single Sided

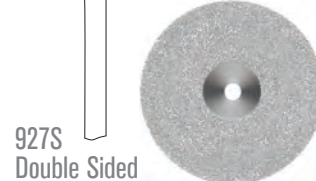
Order #	917F200M	917F220M
Head Size (1/10mm)	200	220
Thickness (mm)	0.17	0.17
Grit	Coarse	Coarse

### SUPERFLEX Mounted Diamond Discs



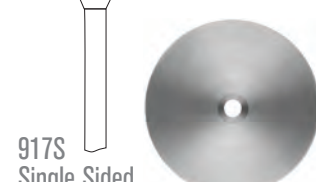
910S  
Double Sided

Order #	910S200M	910S220M
Head Size (1/10mm)	200	220
Thickness (mm)	0.19	0.19
Grit	Fine	Fine



927S  
Double Sided

Order #	927S22M
Head Size (1/10mm)	220
Thickness (mm)	0.19
Grit	Fine



917S  
Single Sided

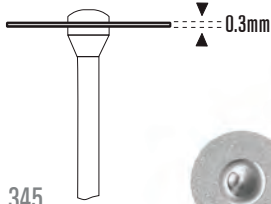
Order #	917S220M
Head Size (1/10mm)	220
Thickness (mm)	0.12
Grit	Fine

# EXPRESS LINE-H

## DIAMOND DISCS

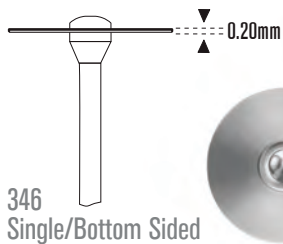
**NEW**  
PRODUCT

### FLEX Mounted Diamond Discs



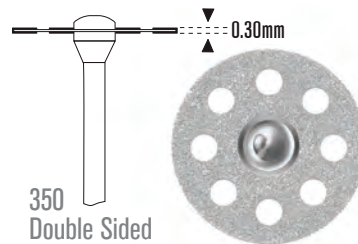
345  
Double Sided

Order #	SW345-160M	SW345-190M	SW345-220M	SW345-240M
Head Size (1/10mm)	160	190	220	240
Thickness (mm)	0.30	0.30	0.30	0.30
Grit	Medium	Medium	Medium	Medium



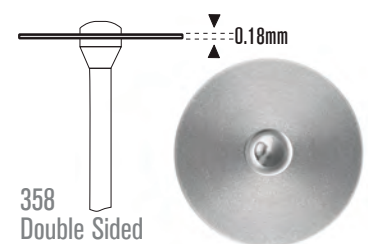
346  
Single/Bottom Sided

Order #	SW346-190M	SW346-220M
Head Size (1/10mm)	190	220
Thickness (mm)	0.20	0.20
Grit	Medium	Medium



350  
Double Sided

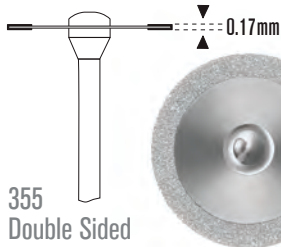
Order #	SW350-220M
Head Size (1/10mm)	220
Thickness (mm)	0.30
Grit	Medium



358  
Double Sided

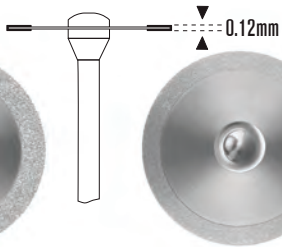
Order #	SW358-220XF
Head Size (1/10mm)	220
Thickness (mm)	0.18
Grit	Extra Fine

### SUPERFLEX Mounted Diamond Discs



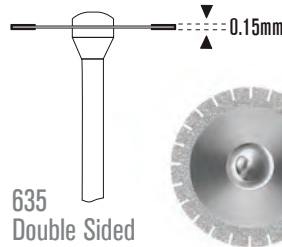
355  
Double Sided

Order #	SW355-220F
Head Size (1/10mm)	220
Thickness (mm)	0.17
Grit	Fine



355  
Double Sided

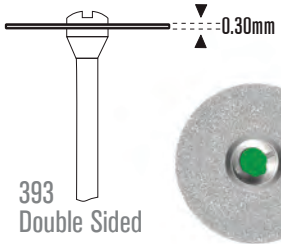
Order #	SW355-220XF
Head Size (1/10mm)	220
Thickness (mm)	0.12
Grit	Extra Fine



635  
Double Sided

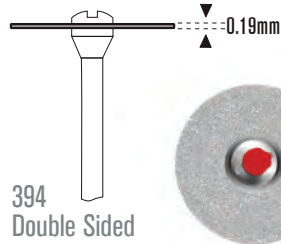
Order #	SW635-190XF
Head Size (1/10mm)	190
Thickness (mm)	0.15
Grit	Extra Fine

### SINTERED Mounted Diamond Discs



393  
Double Sided

Order #	SW393S-190M
Head Size (1/10mm)	190
Thickness (mm)	0.3
Grit	Medium



394  
Double Sided

Order #	SW394S-190F
Head Size (1/10mm)	190
Thickness (mm)	0.19
Grit	Fine

Express Line-H Diamond Discs  
Precision Driven Flexibility  
Designed to Meet Your Separating  
and Contouring Requirements

### HP (Hand Piece)



Shank Diameter - .0925" 2.35mm  
Overall Length - 1.752" 44.5mm

### Usage:

Recommended maximum speed 20,000 RPMS

- Sold in packs of 1 ea.

Experience increased efficiency when separating crowns and bridges, contouring composite and ceramic or cutting ceramic due to the high diamond particle density with Express Line-H Diamond Discs.

The Express Line-H discs are multi-coated and are ideal for all saw cutting while working in the laboratory - whether separating, contouring or even grinding ceramics. Each Express Line-H Diamond Disc features a versatile FLEX, SUPERFLEX or SINTERED stainless diamond disc with thickness between 0.12mm and 0.3 mm.

All discs are available in different grits, perforations and cuts, thus allowing you to work with the best possible view.

# LABORATORY METAL FINISHING BURS

## EXPRESS LINE LAB METAL FINISHING BURS

Express Line Lab Metal Finishing Bur's unique blade geometry cuts easily through metal reducing excessive heat generation and hand strain, resulting in less vibration and requiring only a soft touch when cutting:

- Reduced hand fatigue and increased productivity
- Designed to decrease metal finishing time substantially
- Ideal for shaping and gross reduction
- Sold in packs of 5 ea.



### EXPRESS LINE® Lab Metal Finishing Bur Kit #16100

Kit Contains: One each of the following  
Express Line Lab Metal Finishing Burs  
EL1, EL2, EL 3, EL4, EL5, FG7006



## EXPRESS LINE LAB DIAMONDS - STRAIGHT HANDPIECE INSTRUMENTS

- High diamond density- excellent service life
- Ideal for shaping and gross reduction
- Works on PFM, chrome & ceramic materials
- HP Diamonds on 44.5mm shanks
- Sold in packs of 5 ea.



## DIAMOND MODEL TRIMMING WHEELS

# EXPRESS LINE

Diamond Trimming Wheels

(Fits most Ray Foster, Renfert & Whip Mix Model Trimmers)

Provides smoother  
finish than comparable  
coarse wheels!



- High efficiency cutting increases production
- Designed to last significantly longer than conventional wheels
- Uniform spacing between the diamond aggregates helps ensure immediate removal of debris and less clogging
- Can be used on all gypsum and investment materials of any hardness

### AVAILABLE IN 10" AND 12" SIZES

Item	Diameter	Grit	Drive Pin Hole
16196	10"	Medium	Yes
16198	10"	Medium	No
16197	12"	Medium	Yes
16199	12"	Medium	No

## FOR PORCELAIN & METAL

**JAZZ**  
POLISHERS  
LAB GRINDERS  
ZIRCONIA - PORCELAIN - METAL

**NEW**  
PRODUCT

- Ceramic bonded grinder with diamond grit for more efficiency and durability.
- Maintains shape during application.
- Heat resistant.



Lab Grinder PM2S  
Coarse Large Disc  
Item #89133  
1 PK HP Shank



Lab Grinder PM2S  
Coarse Taper Cylinder  
Item #89134  
3 PK HP Shank



Lab Grinder PM2S  
Coarse Straight Cylinder  
Item #89135  
3 PK HP Shank



Lab Grinder PM2S  
Coarse Small Disc  
Item #89136  
1 PK HP Shank



Lab Grinder PM2S  
Medium Large Disc  
Item #89137  
1 PK HP Shank



Lab Grinder PM2S  
Medium Taper Cylinder  
Item #89138  
3 PK HP Shank



Lab Grinder PM2S  
Medium Straight Cylinder  
Item #89139  
3 PK HP Shank



Lab Grinder PM2S  
Medium Small Disc  
Item #89140  
1 PK HP Shank



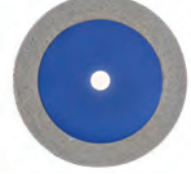
Lab Polisher ZL3S  
Coarse Large Disc  
Item #89141  
1 PK HP Shank



Lab Polisher ZL3S  
Coarse Flame  
Item #89142  
3 PK HP Shank



Lab Polisher ZL3S  
Coarse Wheel  
Item #89143  
3 PK HP Shank



Lab Polisher ZL3S  
Coarse Wheel  
Unmounted 1 PK  
Item #89144



Jazz Lab Polisher ZL3S  
Medium Large Disc  
Item #89145  
1 PK HP Shank



Jazz Lab Polisher ZL3S  
Medium Flame  
Item #89146  
3 PK HP Shank



Lab Polisher ZL3S  
Medium Wheel  
Item #89147  
3 PK HP Shank



Lab Polisher ZL3S  
Medium Wheel  
Unmounted 1 PK  
Item #89148



Jazz Lab Polisher ZL3S  
Fine Large Disc  
Item #89149  
1 PK HP Shank



Lab Polisher ZL3S  
Fine Flame  
Item #89150  
3 PK HP Shank



Lab Polisher ZL3S  
Fine Wheel  
Item #89151  
3 PK HP Shank



Lab Polisher ZL3S  
Fine Wheel  
Unmounted 1 PK  
Item #89152

## FOR ZIRCONIA & LITHIUM DISILICATE - POLISHING

**JAZZ**  
POLISHERS  
LAB POLISHERS  
ZIRCONIA & LITHIUM DISILICATE

**NEW**  
PRODUCT

- Specially designed polisher for full contour zirconia restorations.
- Produces glossy surfaces with high diamond concentration for more efficiency.
- Eliminates the need for glazing.

# HP CARBIDE BURS



Increase your production with SS White® industry leading strength, cutting rate and concentricity.



## ROUND

											
	1/4	1/2	1	2	3	4	5	6	7	8	10
10 Pk. HP HP (BULK)	14820	14821 12012	14823 12001	14826 12002	14829	14832 12004	14835	14838 12006	14841	14844 12008	14846




## STRAIGHT/FLAT END PLAIN

		
	57	59
10 Pk. HP	14867	14868

## STRAIGHT/FLAT END CROSS CUT

							
	557	558	559	560	562	563	558L
10 Pk. HP	14871	14874	14877	14800	14878	14879	14907

## STRAIGHT/ROUND END CROSS CUT

			
	1556	1557	1558
10 Pk. HP HP (BULK)	14897	14898 12057	14901 12058


## INVERTED CONE

								
	33 1/2	34	35	36	37	37L	38	39
10 Pk. HP	14849	14850	14853	14856	14859	14904	14862	14865

## TAPER/ FLAT END CROSS CUT

								
	699	700	701	702	703	701L	702L	703L
10 Pk. HP HP (BULK)	14882	14883	14886 12701	14889 12702	14892 12703	14910	14890	14893





## END CUT

	
	957
HP	14895

## WHEEL

	
	14
HP	14847

## TAPER / ROUND END CROSS CUT

				
	1702	1702L	1703	1703L
10 Pk. HP	14916	14917	14914	14915

# PRE-SINTERED ZIRCONIA POLISHERS



- Ideal use for pre-sintered (unsintered) Zirconia.
- Contouring 2-in-1 abrasive/polisher
- Quick reduction to final smooth finishing
- Accomplish great result in no time.



Jazz Lab Polisher  
GS2S Medium  
Ultra Fine Contour Maxi  
10x22.7mm  
Item #89180  
3 PK - HP Shank



Jazz Lab Polisher  
GS2S Medium  
Ultra Fine Contour Mini  
7x19mm  
Item #89181  
3 PK - HP Shank



Jazz Lab Polisher  
GS1S Medium  
Contour Bullet  
7x13mm  
Item #89182  
5 PK - HP Shank



Jazz Lab Polisher  
GS1S Medium  
Contour Point  
5.6x13mm  
Item #89183  
5 PK - HP Shank



Jazz Lab Polisher  
GS1S Medium  
Contour Knife Edge  
5x0.3mm  
Item #89184  
4 PK - HP Shank



Jazz Lab Polisher  
GS1S Ultra Fine  
White Contour Maxi  
10x22.7mm  
Item #89185  
3 PK - HP Shank



Jazz Lab Polisher  
GS1S Ultra Fine  
White Contour Mini  
7x19mm  
Item #89186  
3 PK - HP Shank



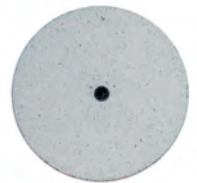
Jazz Lab Polisher  
GS1S Medium  
Contour Maxi  
10x22.7mm  
Item #89187  
3 PK - HP Shank

After preliminary sprue/connector reduction is completed, make final adjustments with the GS2S Contour 2-Step Instrument .  
Use with loupes or under a microscope at the very last adjustment point.

**Step One:** The larger gray segment of this unique instrument quickly reduces the larger final mass (1-2mm) of the connector with minimal risk of damage to the green state zirconia

**Step Two :** The ultra-fine white tip then gently removes and smooths the final portion of excess material remaining at the connector/restoration junction

Make additional anatomical adjustments using any of our Express Line diamonds or other GS contour instruments.



Jazz Lab Polisher  
GS1S Coarse  
Large Wheel  
22x3.2  
Item #89188  
5 PK - HP Shank

# FOR PORCELAIN POLISHING



**NEW PRODUCT**

- Flexible polishing discs for all porcelain materials.
- Diamond grit for highest efficiency.
- Surface corrections without additional glazing.



Lab Polisher P3S  
Coarse Large Disc  
Item #89153  
1 PK HP Shank



Lab Polisher P3S  
Coarse Wheel  
Unmounted  
Item #89154  
1 PK



Lab Polisher P3S  
Coarse Flame  
Item #89155  
3 PK HP Shank



Lab Polisher P3S  
Coarse Small Wheel  
Item #89156  
3 PK HP Shank



Lab Polisher P3S  
Medium Large Disc  
Item #89157  
1 PK HP Shank



Lab Polisher P3S  
Medium Wheel  
Unmounted  
Item #89158  
1 PK



Lab Polisher P3S  
Medium Flame  
Item #89159  
3 PK HP Shank



Lab Polisher P3S  
Medium Small Wheel  
Item #89160  
3 PK HP Shank



Jazz Precision Mandrel  
#89168  
5 PK HP Shank  
Dimensions: 303-050 screw top  
mandrel with 5mm head size



Lab Polisher P3S  
Fine Large Disc  
Item #89161  
1 PK HP Shank



Lab Polisher P3S  
Fine Wheel  
Unmounted  
Item #89162  
1 PK



Lab Polisher P3S  
Fine Flame  
Item #89163  
3 PK HP Shank



Lab Polisher P3S  
Fine Small Wheel  
Item #89164  
3 PK HP Shank

# FOR DENTURE & ORTHO ACRYLICS



**NEW PRODUCT**

Chairside denture adjustments and polishing.

Silicon carbide abrasive polishers with various grits for different areas of application.

Achieve brilliant results for smoothing, pre-polishing and polishing.

**6 PK**



Jazz Denture A3S  
Coarse Large Flame  
Item #89165



Jazz Denture A3S  
Medium Large Flame  
Item #89166



Jazz Denture A3S  
Fine Large Flame  
Item #89167

# Increase Production While Reducing Material Cost with Performance Enhanced Milling Burs.

Manufactured for use in the Roland and Wieland dental mills, SS White milling burs offer greater durability and efficiency for use in zirconia, PMMA and wax versus competitors burs.

Precision milling minimizing remakes.  
Longer service life reduces milling costs.

For Use  
with Roland and  
Wieland Milling  
Machines

*"Fluid, smooth cutting with longevity. Add in the value vs the competition and I'd recommend these burs to my lab manager without question."*

*Brian Burkardt  
Milling Supervisor  
Drake Precision Dental Laboratory*



**DURADI™**  
DIAMOND COATED  
CAD/CAM CARBIDES

**LAZER SHARP™**  
UNCOATED  
CAD/CAM CARBIDES

- Proprietary diamond coating produces a longer lasting milling bur which reduces cost per use
- Reduces remakes by lowering excessive heat and cutting force
- Enhanced blade design creates a sharper cutting instrument and produces a superior surface finish
- Efficient chip removal and polished blades provide bur-free, clean milling results
- Sold in packs of 1 ea.

# FOR USE WITH ROLAND MILLING MACHINES



**SSWROL-034050-20-02**  
 Head Diameter: .3mm  
 Shank Diameter: 4mm  
 Overall Length: 50mm  
 Cutter Design: 2 Flute Ball End  
 Milling Machines:  
 DWX-4, DWX-50, 51D, 52DC  
 Material Use:  
 PMMA, Wax, Zirconia, Composite



**SSWROL-064050-20-02**  
 Head Diameter: .6mm  
 Shank Diameter: 4mm  
 Overall Length: 50mm  
 Cutter Design: 2 Flute Ball End  
 Milling Machines:  
 DWX-4, DWX-50, 51D, 52DC  
 Material Use:  
 PMMA, Wax, Zirconia, Composite



**SSWROL-084050-20-02**  
 Head Diameter: .8mm  
 Shank Diameter: 4mm  
 Overall Length: 50mm  
 Cutter Design: 2 Flute Ball End  
 Milling Machines:  
 DWX-4, DWX-50, 51D, 52DC  
 Material Use:  
 PMMA, Wax, Zirconia, Composite



**SSWROL-104050-20-02**  
 Head Diameter: 1mm  
 Shank Diameter: 4mm  
 Overall Length: 50mm  
 Cutter Design: 2 Flute Ball End  
 Milling Machines:  
 DWX-4, DWX-50, 51D, 52DC  
 Material Use:  
 PMMA, Wax, Zirconia, Composite



**SSWROL-204050-20-02**  
 Head Diameter: 2mm  
 Shank Diameter: 4mm  
 Overall Length: 50mm  
 Cutter Design: 2 Flute Ball End  
 Milling Machines:  
 DWX-4, DWX-50, 51D, 52DC  
 Material Use:  
 PMMA, Wax, Zirconia, Composite



**SSWROL-034050-20-01**  
 Head Diameter: .3mm  
 Shank Diameter: 4mm  
 Overall Length: 50mm  
 Cutter Design: 2 Flute Ball End  
 Milling Machines:  
 DWX-4, DWX-50, 51D, 52DC  
 Material Use:  
 PMMA, Wax, Zirconia



**SSWROL-064050-20-01**  
 Head Diameter: .6mm  
 Shank Diameter: 4mm  
 Overall Length: 50mm  
 Cutter Design: 2 Flute Ball End  
 Milling Machines:  
 DWX-4, DWX-50, 51D, 52DC  
 Material Use:  
 PMMA, Wax, Zirconia



**SSWROL-084050-20-01**  
 Head Diameter: .8mm  
 Shank Diameter: 4mm  
 Overall Length: 50mm  
 Cutter Design: 2 Flute Ball End  
 Milling Machines:  
 DWX-4, DWX-50, 51D, 52DC  
 Material Use:  
 PMMA, Wax, Zirconia



**SSWROL-104050-20-01**  
 Head Diameter: 1mm  
 Shank Diameter: 4mm  
 Overall Length: 50mm  
 Cutter Design: 2 Flute Ball End  
 Milling Machines:  
 DWX-4, DWX-50, 51D, 52DC  
 Material Use:  
 PMMA, Wax, Zirconia



**SSWROL-204050-20-01**  
 Head Diameter: 2mm  
 Shank Diameter: 4mm  
 Overall Length: 50mm  
 Cutter Design: 2 Flute Ball End  
 Milling Machines:  
 DWX-4, DWX-50, 51D, 52DC  
 Material Use:  
 PMMA, Wax, Zirconia



# FOR USE WITH WIELAND MILLING MACHINES



**SSWWIE-073035-20-02**  
 Cutter Diameter: 0.7mm  
 Shank Diameter: 3mm  
 Overall Length: 35mm  
 Cutter Design: 2 Flute Ball End  
 System:  
 Mini  
 Material Use:  
 PMMA, Wax, Zirconia, Composite



**SSWWIE-073040-20-02**  
 Cutter Diameter: 0.7mm  
 Shank Diameter: 3mm  
 Overall Length: 40mm  
 Cutter Design: 2 Flute Ball End  
 System:  
 Select  
 Material Use:  
 PMMA, Wax, Zirconia, Composite



**SSWWIE-253035-20-02**  
 Cutter Diameter: 2.5mm  
 Shank Diameter: 3mm  
 Overall Length: 35mm  
 Cutter Design: 2 Flute Ball End  
 System:  
 Mini  
 Material Use:  
 PMMA, Wax, Zirconia, Composite



**SSWWIE-253040-20-02**  
 Cutter Diameter: 2.5mm  
 Shank Diameter: 3mm  
 Overall Length: 40mm  
 Cutter Design: 2 Flute Ball End  
 System:  
 Select  
 Material Use:  
 PMMA, Wax, Zirconia, Composite



**SSWWIE-073035-20-01**  
 Cutter Diameter: 0.7mm  
 Shank Diameter: 3mm  
 Overall Length: 35mm  
 Cutter Design: 2 Flute Ball End  
 System:  
 Mini  
 Material Use:  
 PMMA, Wax, Zirconia, Composite



**SSWWIE-073040-20-01**  
 Cutter Diameter: 0.7mm  
 Shank Diameter: 3mm  
 Overall Length: 40mm  
 Cutter Design: 2 Flute Ball End  
 System:  
 Select  
 Material Use:  
 PMMA, Wax, Zirconia, Composite



**SSWWIE-253035-20-01**  
 Cutter Diameter: 2.5mm  
 Shank Diameter: 3mm  
 Overall Length: 35mm  
 Cutter Design: 2 Flute Ball End  
 System:  
 Mini  
 Material Use:  
 PMMA, Wax, Zirconia, Composite



**SSWWIE-253040-20-01**  
 Cutter Diameter: 2.5mm  
 Shank Diameter: 3mm  
 Overall Length: 40mm  
 Cutter Design: 2 Flute Ball End  
 System:  
 Select  
 Material Use:  
 PMMA, Wax, Zirconia, Composite



**GREAT WHITE**  
GOLD SERIES  
METAL CUTTING - CAVITY PREPARATION CARBIDE BURS

ROUND



	<b>GW2R</b>	<b>GWSL2R</b>	<b>GW4R</b>	<b>GWSL4R</b>	<b>GW6R</b>	<b>GWSL6R</b>	<b>GW8R</b>
10 PK	18202	18203-5	18204	18205-5	18206	18207-5	18208
100 PK	13086	5-PACK	13087	5-PACK	13088	5-PACK	

PEAR



<b>GW2P</b>	<b>GW330</b>	<b>GW330S</b>
18209	18210	18211
	13090	

INVERTED CONE



<b>GW34</b>	<b>GW35</b>	<b>GW37</b>
18214	18215	18216

STRAIGHT FISSURE



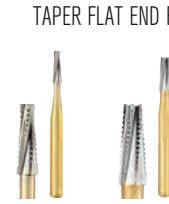
<b>GWH340</b>	<b>GWH342</b>	<b>GWH342L</b>	<b>GW1557</b>	<b>GWSL1557</b>
14918	14919	14920	18221	18225-5
10 PK			13092	5-PACK
100 PK				

STRAIGHT FLAT END FISSURE



<b>GW556</b>	<b>GW557</b>	<b>GW557S</b>	<b>GWSL557</b>	<b>GW558</b>	<b>GWSL558</b>
18217	18218	18219	18220-5	18222	18226-5
	13091		5-PACK		5-PACK

TAPER FLAT END FISSURE



<b>GW701</b>	<b>GW702</b>
18223	18224

PREPARATION



<b>GW245</b>
18212
10 PK
13089

RESTORATION REMOVAL



<b>GW-1</b>	<b>GW-2</b>	<b>GW1S</b>	<b>GW2S</b>
15061	15062	15063	15064
13093	13095	13094	13096

**GREAT WHITE Z**  
ZIRCONIA CUTTING DIAMOND INSTRUMENTS

ROUND END TAPER



<b>GWZ 856-018</b>
ITEM# 18161

ROUND



<b>GWZ 801-014</b>
ITEM# 18162



<b>GWZ 801-018</b>
ITEM# 18163

FOOTBALL



<b>GWZ 379-023</b>
ITEM# 18164

**GREAT WHITE**  
ULTRA  
CROWN & BRIDGE PREPARATION CARBIDE BURS

STERILE R AVAILABLE IN ROLLS OF 25

FOOTBALL



<b>GWU 379-023</b>
18193-5
5 PK
10909

STERILE FG  
HEAD LENGTH (mm) 4.2  
MAX HEAD DIAMETER (mm) 2.3

SHORT FLAT END TAPER



<b>GWU 845KR-016</b>	<b>GWU 845KR-018</b>	<b>GWU 845KR-025</b>
18195-5	18196-5	18197-5
4.0	4.0	4.0
1.6	1.8	2.5

FLAT END TAPER



<b>GWU 847-016</b>	<b>GWU 847-018</b>	<b>GWU 847-020</b>
18200-5	18191-5	18192-5
8.0	8.0	8.0
1.6	1.8	2.0

FLAT END TAPER SHORT SHANK



<b>GWU 847-016S</b>	<b>GWU 847-018S</b>	<b>GWU 847-020S</b>
18186-5	18187-5	18185-5
8.0	8.0	8.0
1.6	1.8	2.0

ROUND END TAPER



<b>GWU 855-025</b>	<b>GWU 856-016</b>	<b>GWU 856-018</b>	<b>GWU 856-020</b>	<b>GWU856-023</b>
18194-5	18198-5	18188-5	18189-5	18194-5
7.0	8.0	8.0	8.0	8.0
2.5	1.6	1.8	2.0	2.5

STERILE FG  
HEAD LENGTH (mm) 7.0  
MAX HEAD DIAMETER (mm) 2.5

ROUND END TAPER SHORT SHANK



<b>GWU 856-016S</b>	<b>GWU 856-018S</b>	<b>GWU 856-020S</b>
18182-5	18196-5	18184-5
8.0	4.0	8.0
1.6	1.8	2.0

DEPTH CUTTER



<b>GWDC1</b>	<b>GWDC2</b>
15040	15041
10 PK	
10933	10138

# TOP 50 SELLING LAB CUTTERS

## E SERIES™ Cross Cut



Shank	ISO Shape	001	001	110	123	143	187	198	198	199	200
SSW Item Number		GW71-023E-4	GW71-050E-4	GW296-040E-4	GW364-023E-4	GW72-060E-4	GW257-023E-4	GW351-040E-4	GW138-023E-4	GW261-023E-4	GW79-040E-4
ISO Grit		190	190	190	190	190	190	190	190	190	190
Head Dia		023	050	040	023	060	023	040	023	023	040
Head Length mm		2.1	4.5	6	15	13	15	8	8	11.5	13
Color Band											
Max Speed		40K	30K	30K	40K	20K	40K	30K	40K	40K	30K



Shank	ISO Shape	200	200	201	201	225	237	237	237	237	273
SSW Item Number		GW79-050E-4	GW351-060E-4	GW257-060E-4	GW79-060E-4	GW137-023E-4	GW77-023E-4	GW77-029E-4	GW77-040E-4	GW77-060E-4	GW251-040E-4
ISO Grit		190	190	190	190	190	190	190	190	190	190
Head Dia		050	060	060	060	023	023	029	040	060	040
Head Length mm		13	13	14	14	5.5	5.5	5.5	9	11	9
Color Band											
Max Speed		30K	20K	20K	20K	40K	40K	40K	30K	20K	30K



## EF SERIES™ Cross Cut



Shank	ISO Shape	275	275	277	277	277	289	292	141	187	187
SSW Item Number		GW251-060E-4	GW251-070E-4	GW73-023E-4	GW73-040E-4	GW73-060E-4	GW139-023E-4	GW295-023E-4	GW129-023EF-4	GW257-023EF-4	GW257-060EF-4
ISO Grit		190	190	190	190	190	190	190	140	140	140
Head Dia		060	070	023	040	060	023	023	023	023	060
Head Length mm		14	14	3.8	6	10	8	15	8	15	14
Color Band											
Max Speed		20K	20K	40K	30K	20K	40K	40K	40K	40K	20K



Shank	ISO Shape	198	200	200	201	237	237	275	277	289	292
SSW Item Number		GW138-023EF-4	GW79-040EF-4	GW351-060EF-4	GW79-060EF-4	GW77-023EF-4	GW77-029EF-4	GW251-060EF-4	GW73-023EF-4	GW139-023EF-4	GW295-023EF-4
ISO Grit		140	140	140	140	140	140	140	140	140	140
Head Dia		023	040	060	060	023	029	060	023	023	023
Head Length mm		8	13	13	14	5.5	5.5	14	3.8	8	15
Color Band											
Max Speed		40K	40K	40K	20K	40K	40K	20K	40K	40K	40K

## FSQ SERIES™ Cross Cut



## GE SERIES™ Cross Cut



## GSQ SERIES™ Cross Cut



Shank	ISO Shape	141	200	275	200	275	199	200	200	201	275
SSW Item Number		GW129-023FSQ-4	GW79-040FSQ-4	GW251-060FSQ-4	GW351-060GE-4	GW251-060GE-4	GW261-023GSQ-4	GW79-040GSQ-4	GW351-060GSQ-4	GW79-070GSQ-4	GW251-060GSQ-4
ISO Grit		132	132	132	220	220	172	172	172	172	172
Head Dia		023	040	060	060	060	023	040	060	070	060
Head Length mm		8	14	14	13	14	11.5	13	13	14	14
Color Band											
Max Speed		40K	30K	20K	20K	20K	40K	30K	20K	20K	20K

