



**PIRANHA**<sup>®</sup>  
SINGLE-PATIENT-USE  
DIAMOND INSTRUMENTS



**PIRANHA**<sup>®</sup> **2X**  
SINGLE-PATIENT-USE  
TURBO DOUBLE ACTION DIAMOND INSTRUMENTS



simply better dentistry™  
**WHITE**<sup>®</sup>

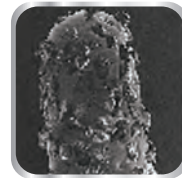
# Why Throw Money Away

On Multi-Use Diamonds That Are Expensive and Less Efficient?



## Save up to 50% per use while increasing office productivity

- **Quality & Consistency:** Significantly increase preparation quality with the use of a new diamond for each patient.
- **Broad Selection:** With over 550 diamonds to choose from, Piranha meets all of your clinical needs.
- **Simplicity:** Eliminate the expense of sterilization and worry of cross contamination.
- **Control:** Clinicians prefer the feel of a “fresh” diamond for each patient.



New Diamond Before Use



Same Diamond After Multiple Uses and Sterilizations

## Stop wasting time, start saving money with Piranha Diamonds

- **Increase Revenue:** Reduce lost time associated with cleaning, sterilizing and re-using multi-use diamonds.
- **Gain Referrals:** Maximum patient satisfaction leads to increased referrals.
- **Stay on Schedule:** Reduce the inefficiency associated with repeated use of multi-use diamonds.

*“Why continue to throw away money by using those expensive multi-use diamonds? Piranha Single-Patient-Use Diamonds offer superior performance at a fraction of the cost, cut after cut.”*

*– Dr. George Freedman*

# DIAMOND INSTRUMENTS



- Our new extended line offers the **BROADEST RANGE OF SIZES AND GRITS** for all your diamond needs.
- We offer a **WIDE SELECTION** of **SHORT SHANKS** and **SHORTER-THAN-SHORT SHANKS** for improved access.
- ISO 13485 certified for quality and consistency.

## Shank Lengths



## Grit Size Designation

- Super Coarse (SC)
- Coarse (C)
- Medium (M)
- Fine (F)
- Very Fine (VF)
- Ultra Fine (UF)

## Micron (µm)

- 149÷177 (SC)
- 105÷149 (C)
- 62÷125 (M)
- 38÷45 (F)
- 30÷38 (VF)
- 8÷12 (UF)

### Pointed Football



### Football



### Mosquito Nose



### Round



SHAPE	368-016	368-020	368-021	368-023	379-018	379-023	392-016	801-010	801-012	801-013	801-014	801-015
DIAMETER (mm)	1.6	2.0	2.1	2.3	1.8	2.3	1.6	1.0	1.2	1.3	1.4	1.5
HEAD LENGTH (mm)	3.4	4.5	4.5	5.0	3.4	3.9	4.5	0.9	1.1	1.2	1.3	1.4
TIP DIAMETER (mm)	-	-	-	-	-	-	-	-	-	-	-	-
● Super Coarse				368-023SC		379-023SC						
● Coarse	368-016C	368-020C	368-021C	368-023C	379-018C	379-023C			801-012C	801-014C		
● Medium	368-016M		368-021M	368-023M	379-018M	379-023M	392-016M	801-010M	801-012M	801-013M	801-014M	801-015M
● Fine	368-016F			368-023F	379-018F	379-023F	392-016F			801-013F	801-014F	
● Very Fine	368-016VF			368-023VF		379-023VF	392-016VF				801-014VF	
S (Short Shank)					379-018C-S							

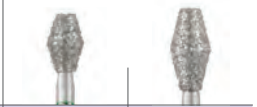
### Round



### Inverted Cone



### Barrel



SHAPE	801-016	801-018	801-021	801-023	805-010	805-012	805-014	805-016	807-016	811-033	811-037
DIAMETER (mm)	1.6	1.8	2.1	2.3	1.0	1.2	1.4	1.6	1.6	3.3	3.7
HEAD LENGTH (mm)	1.5	1.7	2.0	2.2	1.1	1.2	1.4	1.6	4.0	5.0	7.0
TIP DIAMETER (mm)	-	-	-	-	1	1.2	1.4	1.6	1.6		
● Super Coarse				801-023SC						811-033SC	811-037SC
● Coarse	801-016C	801-018C	801-021C	801-023C	805-010C	805-012C	805-014C	805-016C	807-016C	811-033C	811-037C
● Medium	801-016M	801-018M	801-021M	801-023M	805-010M	805-012M	805-014M	805-016M			
● Fine	801-016F	801-018F	801-021F	801-023F							
● Very Fine		801-018VF		801-023VF							
○ Ultra Fine		801-018UF		801-023UF							

### Depth Cutter



### Pear



### Tri-Wheel Depth Cutter



### Depth Gauge



### Flat End Cylinder



SHAPE	828-022	828-026	830-008	830-010	830-012	834-016	834-021	L04009	L06009	835-008	835-009	835-010	835-012
DIAMETER (mm)	2.2	2.6	0.8	1.0	1.2	1.6	2.1	0.9	0.9	0.8	0.9	1.0	1.2
HEAD LENGTH (mm)	0.9	0.9	2.5	3.0	3.0	6.0	6.0	0.4	0.6	3.0	3.0	3.0	4.0
TIP DIAMETER (mm)	-	-	0.8	1	1.2	-	-			0.8	0.9	1.0	1.2
DEPTH	.3	.5				.3	.5						
● Coarse			830-008C	830-010C	830-012C							835-010C	835-012C
● Medium	828-022M	828-026M	830-008M	830-010M	830-012M	834-016M	834-021M	L04009M	L06009M	835-008M	835-009M	835-010M	835-012M
S (Short Shank)			830-008M-S	830-010M-S	830-012M-S							835-010C-S	835-012M-S





### Round End Taper

### Round End Taper Long

SHAPE	855-018	855-025	856-012	856-014	856-016	856-018	856-020	856-021	856-024	856-025	856L-014	856L-016	856L-018
DIAMETER (mm)	1.8	2.5	1.2	1.4	1.6	1.8	2.0	2.1	2.4	2.5	1.4	1.6	1.8
HEAD LENGTH (mm)	6.0	7.0	8.0	8.0	8.0	8.0	8.0	8.0	8.0	8.0	9.0	9.0	9.0
TIP DIAMETER (mm)	1.2	1.6	0.6	0.8	1.0	1.2	1.4	1.5	1.8	1.9	0.8	1.0	1.2
● Super Coarse	855-018SC		856-012SC	856-014SC	856-016SC	856-018SC		856-021SC		856-025SC	856L-014SC	856L-016SC	856L-018SC
● Coarse	855-018C		856-012C	856-014C	856-016C	856-018C	856-020C	856-021C	856-024C	856-025C			856L-018C
● Medium	855-018M	855-025M	856-012M	856-014M	856-016M	856-018M		856-021M		856-025M	856L-014M	856L-016M	856L-018M
● Fine			856-012F	856-014F	856-016F	856-018F		856-021F				856L-016F	856L-018F
● Very Fine					856-016VF								
S (Short Shank)	855-018M-S	855-025M-S	856-012C-S	856-014C-S	856-016C-S	856-018C-S		856-021C-S			856L-014C-S	856L-016C-S	
SS (Shorter than Short Shank)					856-016SC-SS				856-024C-SS				

### Safe End Taper

### Christmas Tree

### Needle

SHAPE	851-012	851-016	852-010	852-012	858-008	858-013	858-014	858-016	859-010	859-014	859-016	859-018
DIAMETER (mm)	1.2	1.6	1.0	1.2	0.8	1.3	1.4	1.6	1.0	1.4	1.6	1.8
HEAD LENGTH (mm)	8.0	8.0	6.0	6.0	8.0	8.0	8.0	8.0	10.0	10.0	10.0	12.0
TIP DIAMETER (mm)	0.9	1.3	0.5	0.5	0.3	0.4	0.5	0.6	0.25	0.4	0.6	0.8
● Super Coarse							858-014SC					
● Coarse			852-010C				858-014C	858-016C	859-010C	859-014C		859-018C
● Medium			852-010M	852-012M	858-008M	858-013M	858-014M	858-016M	859-010M	859-014M	859-016M	859-018M
● Fine	851-012F	851-016F		852-012F	858-008F	858-013F	858-014F	858-016F	859-010F	859-014F	859-016F	859-018F
● Very Fine				852-012VF	858-008VF		858-014VF			859-014VF	859-016VF	859-018VF
S (Short Shank)							858-014C-S			859-014C-S		859-018C-S

### Flame

SHAPE	860-010	860-012	860-014	860-016	862-010	862-012	862-014	862-016	862-017	862L-018	863-012	863-014	863-016
DIAMETER (mm)	1.0	1.2	1.4	1.6	1.0	1.2	1.4	1.6	1.7	1.8	1.2	1.4	1.6
HEAD LENGTH (mm)	3.0	4.0	5.0	5.0	8.0	8.0	8.0	8.0	8.0	9.0	10.0	10.0	10.0
TIP DIAMETER (mm)	0.35	0.45	0.45	0.45	0.35	0.35	0.45	0.45	0.5	0.5	0.45	0.45	0.45
● Super Coarse							862-012SC	862-014SC					
● Coarse		860-012C	860-014C		862-010C	862-012C	862-014C	862-016C		862L-018C	863-012C	863-014C	863-016C
● Medium	860-010M	860-012M	860-014M	860-016M	862-010M	862-012M	862-014M	862-016M	862-017M	862L-018M	863-012M	863-014M	863-016M
● Fine		860-012F			862-010F	862-012F	862-014F	862-016F	862-017F	862L-018F	863-012F	863-014F	863-016F
● Very Fine		860-012VF				862-012VF		862-016VF			863-012VF		
S (Short Shank)						862-012C-S	862-014C-S	862-016C-S			863-012C-S		863-016C-S
SS (Shorter than Short Shank)						862-012C-SS							
						862-012M-SS							

### Flame

### Modified Beveled Cylinder

SHAPE	863-018	868-018	868-021	868-022	868-023	868-024	888-012	889-009	877-010	877-012	878-012	878-014	878-016
DIAMETER (mm)	1.8	1.8	2.1	2.2	2.3	2.4	1.2	0.9	1.0	1.2	1.2	1.4	1.6
HEAD LENGTH (mm)	10.0	5.0	5.0	5.0	5.0	5.0	7.0	4.0	6.0	6.0	8.0	8.0	8.0
TIP DIAMETER (mm)	0.45	0.45	0.2	0.2	0.2	0.2	0.3	0.4	1.0	1.2	1.2	1.4	1.6
● Super Coarse							888-012SC						
● Coarse	863-018C	868-018C								877-012C	878-012C	878-014C	878-016C
● Medium	863-018M	868-018M				868-024M	888-012M		877-010M	877-012M	878-012M	878-014M	878-016M
● Fine	863-018F			868-022F	868-023F		888-012F	889-009F	877-010F	877-012F	878-012F	878-014F	878-016F
● Very Fine			868-021VF				888-012VF						

### Modified Beveled Cylinder

### Curetage

SHAPE	879-012	879-014	879-016	877K-016	878K-012	878K-014	878K-016	878K-018	878K-021	879K-012	879K-014	879K-016	879K-017
DIAMETER (mm)	1.2	1.4	1.6	1.6	1.2	1.4	1.6	1.8	2.1	1.2	1.4	1.6	1.7
HEAD LENGTH (mm)	10.0	10.0	10.0	6.0	8.0	8.0	8.0	8.0	8.0	10.0	10.0	10.0	10.0
TIP DIAMETER (mm)	1.2	1.4	1.6	1.2	0.9	1.1	1.5	1.5	1.7	0.9	1.1	1.2	1.3
● Super Coarse						878K-014SC	878K-016SC						
● Coarse	879-012C	879-014C	879-016C	877K-016C	878K-012C	878K-014C	878K-016C	878K-018C	878K-021C		879K-014C	879K-016C	
● Medium	879-012M	879-014M	879-016M	877K-016M	878K-012M	878K-014M	878K-016M	878K-018M	878K-021M	879K-012M	879K-014M	879K-016M	879K-014M
● Fine	879-012F	879-014F	879-016F	877K-016F	878K-012F	878K-014F	878K-016F	878K-018F	878K-021F	879K-012F	879K-014F	879K-016F	879K-017F
SS (Shorter than Short Shank)				877K-016C-SS 877K-016M-SS									

### Curetage

### Round End Cylinder

### Beveled Cylinder

SHAPE	879K-018	879K-021	880-010	880-012	880-014	881-010	881-012	881-014	881-016	881-018	885-012
DIAMETER (mm)	1.8	2.1	1.0	1.2	1.4	1.0	1.2	1.4	1.6	1.8	1.2
HEAD LENGTH (mm)	10.0	10.0	6.0	6.0	6.0	8.0	8.0	8.0	8.0	8.0	8.0
TIP DIAMETER (mm)	-	-	1.0	1.2	1.4	1.0	1.2	1.4	1.6	1.8	1.2
● Super Coarse											
● Coarse	879K-018C			880-012C	880-014C		881-012C	881-014C		881-018C	885-012C
● Medium	879K-018M	879K-021M	880-010M	880-012M	880-014M		881-012M	881-014M		881-018M	885-012M
● Fine	879K-018F	879K-021F	880-010F	880-012F	880-014F	881-010F	881-012F	881-014F	881-016F		885-012F
● Very Fine									881-016VF		

### Beveled Cylinder

### Acorn

### Wheel

### Flat End Cylinder

### Flat End Taper

SHAPE	885-014	885-016	886-012	886-014	886-016	905-023	905-027	905-031	909-035	909-040	909-042	6051-017	6055-018
DIAMETER (mm)	1.4	1.6	1.2	1.4	1.6	2.3	2.7	3.1	3.5	4.0	4.2	1.7	1.8
HEAD LENGTH (mm)	8.0	8.0	10.0	10.0	10.0	2.5	2.9	2.9	1.5	1.2	1.2	9.0	9.0
TIP DIAMETER (mm)	0.45	0.45	0.45	0.45	0.45	0.3	0.3	0.3	-	-	-	1.7	1.4
● Super Coarse										909-040SC			
● Coarse	885-014C	885-016C	886-012C	886-014C	886-016C				909-035C	909-040C	909-042C	6051-017C	6055-018C
● Medium	885-014M	885-016M	886-012M	886-014M	886-016M	905-023M	905-027M	905-031M		909-040M			
● Fine	885-014F	885-016F	886-012F	886-014F	886-016F	905-023F	905-027F			909-040F			

### KS

### Finishing

### Tissue Protective End

SHAPE	KS03	KS13	KS23	KS33	KS35	SE3	SE4	SE6	SE8	SE9	10839-012	10839-014	10839-016
DIAMETER (mm)	1.3	1.3	2.3	3.3	3.5	3.0	4.0	6.0	8.0	9.0	1.2	1.4	1.6
HEAD LENGTH (mm)	7.0	7.0	8.0	8.0	8.0	3.0	4.0	6.0	8.0	9.0	0.10	0.10	0.10
TIP DIAMETER (mm)	1.3	1.3	2.3	3.3	3.5	0.9	0.5	0.6	0.6	0.6	-	-	-
● Super Coarse	KS03-SC	KS13-SC	KS23-SC	KS33-SC	KS35-SC								
● Medium						SE3M					18039-012M	10839-014M	10839-016M
● Fine						SE3F	SE4F	SE6F	SE8F	SE9F			
● Very Fine						SE3VF	SE4VF	SE6VF	SE8VF	SE9VF			

## Easy Order Item Numbers

### 2-TIER PRICING

TIER 1 = All 018 & smaller bur diameters

TIER 2 = All 020 & larger bur diameters

L04009 & L06009 = Special Pricing (see price list)

## Easy Dispense Packaging

## Available In 25-Packs



# TURBO DOUBLE ACTION DIAMOND INSTRUMENTS



TURBO DOUBLE ACTION DIAMOND INSTRUMENTS

- Deep, blade-like channel edges help to increase cutting speed  
- Aggressive cutting reduces chair time
- Proven to cut cooler than competitive diamonds\*
- Great for bulk reduction with little or no finishing required because medium grit diamonds are used



Cross Channels...  
Flush debris and  
reduce clogging for  
a faster, cooler cut.

don't  
even  
have on  
website

	Football					Flat End Taper							Round End Taper							
SHAPE	368-023	847-018	847-020	847-024	848-020	849-012	849-018	849-022	850-016	854-018	855-014	855-018								
DIAMETER (mm)	2.3	1.8	2.0	2.4	2.0	1.2	1.8	2.2	1.6	1.8	1.4	1.8								
HEAD LENGTH (mm)	5.0	8.0	8.0	8.0	10.0	4.0	4.0	4.0	10.0	10.0	6.0	6.0								
TIP DIAMETER (mm)	0.2	1.2	1.4	1.8	1.2	0.5	1.1	1.5	1	1.4	0.8	1.2								
	368-023-2X	847-018-2X	847-020-2X	847-024-2X	848-020-2X	849-012-2X	849-018-2X	849-022-2X	850-016-2X	854-018-2X	855-014-2X	855-018-2X								

	Round End Taper							Flame
SHAPE	855-023	856-014	856-016	856-018	856L-018	856-020	856-024	868-018
DIAMETER (mm)	2.3	1.4	1.6	1.8	1.8	2.0	2.4	1.8
HEAD LENGTH (mm)	6.0	8.0	8.0	8.0	9.0	8.0	8.0	5.0
TIP DIAMETER (mm)	1.8	0.8	1	1.2	1	1.4	1.8	-
	855-023-2X	856-014-2X	856-016-2X	856-018-2X	856L-018-2X	856-020-2X	856-024-2X	868-018-2X

**EASY DISPENSE  
PACKAGING**

**AVAILABLE  
IN 5-PACKS**

	Modified Beveled Cylinder			Curetage			Round End Cylinder		
SHAPE	877-014	878-016	879-018	878K-020	885K-020	886K-023	880-014	881-016	882-018
DIAMETER (mm)	1.4	1.6	1.8	2.0	2.0	2.3	1.4	1.6	1.8
HEAD LENGTH (mm)	6.0	8.0	10.0	8.0	8.0	10.0	6.0	8.0	10.0
TIP DIAMETER (mm)	1.4	1.6	1.8	1.6	1.6	1.9	1.4	1.6	1.8
	877-014-2X	878-016-2X	879-018-2X	878-020-2X	885-020-2X	886-023-2X	880-014-2X	881-016-2X	882-018-2X

\*Study available upon request.

Piranha Brochure - Rev. 3



6 4 6 0 9

**800.535.2877 | [www.sswhitedental.com](http://www.sswhitedental.com)**  
1145 Towbin Avenue Lakewood, New Jersey 08701